



RESEARCH

Open Access

# The protective effects of plasma gelsolin on stroke outcome in rats

Huong T Le<sup>1</sup>, Aaron C Hirko<sup>2</sup>, Jeffrey S Thinschmidt<sup>2</sup>, Maria Grant<sup>2</sup>, Zhimin Li<sup>3</sup>, Joanna Peris<sup>3</sup>, Michael A King<sup>2,4</sup>, Jeffrey A Hughes<sup>5</sup> and Sihong Song<sup>1\*</sup>

## Abstract

**Background:** To date, recombinant tissue plasminogen activator (rtPA) is the only approved drug for ischemic stroke. It is intravenously administered functioning as a thrombolytic agent and is used to obtain reperfusion of the affected area of the brain. Excitotoxicity, inflammation and apoptosis are all involved in delayed neuronal death following stroke and offer multiple opportunities to intervene with neuroprotective agents. Gelsolin (GSN) is an actin- and calcium-binding protein mediating the disassembly of actin filaments and activity of calcium channels. It also functions as a regulator of apoptosis and inflammatory responses. This study tests the hypothesis that increasing the concentration of the form of GSN known as plasma GSN (pGSN) near an infarct will provide neuroprotection following ischemic stroke.

**Methods:** We induced middle cerebral artery occlusion (MCAO) in male rats via intracranial injection of endothelin-1 (ET-1), a potent vasoconstrictor, and then treated with local delivery of pGSN. Whole brain laser Doppler perfusion imaging was performed through the skull to assess MCAO effectiveness. Cylinder and vibrissae tests evaluated sensorimotor function before and 72 h after MCAO. Infarct volumes were examined 72 h after MCAO via 2, 3, 5-triphenyltetrazolium chloride (TTC) assay.

**Results:** Estimates of relative cerebral perfusion were significantly decreased in all groups receiving MCAO with no differences detected between treatments. Despite equivalent initial strokes, the infarct volume of the pGSN treatment group was significantly reduced compared with the untreated MCAO rats at 72 h. ET-1 induced significant deficits in both cylinder and vibrissae tests while pGSN significantly limited these deficits.

**Conclusion:** Gelsolin could be a promising drug for protection against neurodegeneration following ischemic stroke.

**Keywords:** ischemic stroke, plasma gelsolin, protective effect, endothelin-1 induced MCAO

## Introduction

Stroke or brain attack occurs when the blood supply to the brain is interrupted, usually because a blood vessel is blocked by a clot or loses structural integrity permitting hemorrhage. The disease is not subject to a particular race or ethnic group [1]. In 2009, 795,000 strokes occurred in the United States, i.e. a stroke occurs once every 40 seconds and a death occurs every 4 minutes [2]. According to the Centers for Disease Control and Prevention (CDC), the total cost of stroke was \$68.9

billion and the number is expected to rise. Of all strokes, 87% are ischemic [2]. Currently, recombinant tissue plasminogen activator (rtPA) is the only FDA-approved therapeutic agent for ischemic stroke. rtPA is effective only if intravenously administered within 3 to 4.5 h of stroke onset, and can have adverse neurotoxic effects even with proper use [3]. The drug can only be used within a narrow time window after a stroke begins and only about two percent of stroke patients are able to access rtPA therapy. Therefore, development of new agents for stroke is essential.

The mechanisms involved in stroke injury and repair are extremely complex, involving excitotoxicity and necrotic cell death occurring within minutes of stroke

\* Correspondence: shsong@ufl.edu

<sup>1</sup>Department of Pharmaceutics, University of Florida College of Pharmacy, Gainesville, FL 32610, USA

Full list of author information is available at the end of the article

onset [4]. As well, there is increasing evidence showing that genetically programmed cell death during post-ischemic tissue inflammation (that can last days to weeks) has a detrimental effect [5,6]. Therefore, therapeutic strategies targeting that delay or dampening inflammatory responses could inhibit the progression of the tissue damage and improve the overall outcome of stroke.

Gelsolin (GSN) is a ubiquitous [7,8] actin filament-severing, capping and actin nucleation protein of eukaryotes. Originally described as an actin-binding protein, GSN exists in both intracellular (cytoplasmic protein, cGSN) and extracellular (a secreted protein or plasma gelsolin, pGSN) forms. pGSN, also known as brevin and actin-depolymerizing factor, consists of a single 755-amino acid polypeptide chain (84 kDa) including a 25-amino acid N-terminal extension [9] that distinguishes it from cGSN (82 kDa). Most cells secrete pGSN, however smooth, skeletal and cardiac muscle cells produce larger amounts of pGSN [7]. The plasma concentration of pGSN is 200-300 mg/L [10-12] and isolated human and rabbit pGSN have a plasma half-life of 2.3 days [13]. Because pGSN derives from muscle tissue, it must pass through interstitial fluid of the extracellular matrix to localize in the blood. pGSN also exists in human cerebrospinal fluid (CSF) [14]. Although certain functions for the intracellular isoforms have been described, the function(s) of the plasma isoforms remain unclear. The high affinity of pGSN for filamentous actin (F-actin) ( $K_a > 10^9$ /mol/L) [15] suggests that its physiological function is likely related to its actin-binding properties. pGSN may scavenge actin leaked from injured tissue and limit subsequent damage instigated by extracellular filamentous actin [16]. Studies have shown that large amounts of F-actin could potentially increase the blood viscosity and perturb blood flow through the microvasculature [17].

It is also well established that pGSN levels decrease in blood in acute inflammation conditions that involve tissue damage [18-21]. Consistent with the idea that pGSN is not only a biomarker for inflammation but also an important protective factor, repletion of pGSN in a mouse model of endotoxemic sepsis led to solubilization of circulating actin aggregates and significantly reduced mortality in mice [22]. GSN knockout mice neurons are vulnerable to glucose/oxygen deprivation, and pharmacological brain actin depolymerization restored resistance to ischemic stroke in knockout mice [23]. The knockout mice results could not determine which endogenous form of gelsolin is responsible, or whether gelsolin in or near the infarct mediates neuroprotective effects. Gelsolin-overexpressing transgenic mice demonstrate neuroprotection against experimental stroke [23], but it is not known whether these effects are mediated

by pGSN or cGSN, or whether it is GSN near the infarct that mediates the protection.

To test the hypothesis that proximal administration of pGSN can antagonize stroke pathology, we induced transient middle cerebral artery occlusion (tMCAO) in male rats via intracranial injection of ET-1, a potent vasoconstrictor, and post-treated with discrete brain injection of pGSN. Cylinder and vibrissae tests were used to examine sensorimotor function before and 72 h after MCAO to assess functional deficits. Whole brain laser Doppler perfusion imaging was performed through the skull to verify MCAO effectiveness. Infarct volumes were examined 72 h after MCAO using 2, 3, 5-triphenyltetrazolium chloride (TTC) assay.

## Materials and methods

### Materials

Endothelin-1 (1-39) rat (ET-1), purchased from American Peptide Company, Inc. (CA, U.S.A.), was dissolved in sterile phosphate buffered saline (PBS) to make a stock concentration of 80  $\mu$ M. The stock solution was stored at -20°C. ET-1 was thawed, centrifuged and placed on ice until ready to inject. Human plasma gelsolin (pGSN) was a generous gift from Critical Biologics Corporation (MA, U.S.A.) Artificial cerebrospinal fluid (aCSF) was obtained from Fisher Scientific, Inc. (PA, U.S.A.)

### Animal model

Experiments were conducted on 19 male Sprague-Dawley rats weighing from 210-270 g. Animals were randomly divided into five groups: two groups of three for laser Doppler measurement, two groups of five for experimental ischemic stroke by ET-1 plus pGSN or control injections, with evaluation of behavior and brain damage, a group of three for artificial cerebrospinal fluid (aCSF) injection. Two animals in the group of five injected with ET-1 alone were eliminated from the study: one died on day 2 and one did not show any movement in behavioral studies. One animal was eliminated from the ET-1 plus pGSN group since we could not define the infarction area. The exclusion rate was 3/13 for the treatment study and 0/6 for the laser Doppler study. All procedures were implemented according to a protocol approved by the University of Florida *Institutional Animal Care and Use Committee (IACUC)*.

A model of reversible focal ischemia using ET-1 was used as previously described [24,25]. When ET-1 is injected proximal to the middle cerebral artery (MCA), it acts on vascular smooth muscle cell receptors ET<sub>A</sub> and ET<sub>B</sub> [26], causing arterial constriction and reduced blood flow to areas in the brain supplied by the ipsilateral MCA (anterolateral neocortex, cortical areas, and caudate nucleus). Anesthesia was initiated with

isoflurane (5% in O<sub>2</sub> and maintained with 1.5-2.5% in O<sub>2</sub>). Body temperature was maintained between 36.5-37.5°C throughout surgery using a water-jacketed heating blanket. The animals were placed in a stereotaxic frame (Braintree Scientific, Inc., MA, U.S.A.) and secured in the flat skull position. A midline incision was made spanning the bregma and lambda landmarks, and a small hole (3 mm i.d) was drilled in the cranium adjacent to the left MCA (coordinates: 0.2 mm anterior, 5.2 mm lateral, and 1 mm dorsal to the bottom of the skull). A 27-gauge needle was used to inject 3 µL of ET-1 (240 pmol) at 1 µL/min. After ET-1 injection, the needle was left in place for an additional 3 min before being slowly withdrawn. The system was flushed by DI water and pGSN was loaded in the needle. Approximately, 5-10 min after ET-1 injection, 3 µL of pGSN (3 µg or 35.71 pmol) was injected, after which the needle was again left in place for 3 min, then slowly removed. The incision was closed and animals were kept warm at 37°C until totally recovered from anesthesia.

#### Cerebral Perfusion Measurement

In each animal, skin on the scalp was removed and two holes (3 mm i.d) were made above in each hemisphere. ET-1 or ET-1 plus pGSN were injected in the left side of the brain and the other side was used as an internal control. Relative blood flux/perfusion measurements were made using Laser Doppler (MOORLDI, Moor Instrument Ltd, UK) at four different time points: pre-injection, 10-20 min, 30-35 min, and 55-65 min from the ET-1 injection time. The measurements were based on the moving blood in the microvasculature that causes a Doppler frequency shift of the scattered laser light, which is photodetected and then processed to build a color coded map of relative blood flow. A digital camera records a color clinical photograph at the same time, corresponding closely with the blood flow image in size and aspect. The pseudocoloring is relative flux (number of red blood cells multiplied by speed) where "warm" colors indicate relative high flux and "cool" colors represent relative low flux. The 16-bit color scans were made with arbitrarily assigned unit from 0 (lower limit) to 1, 000 or more (upper limit). The scan speed was 10 ms/pixel and the total scan (scan area was about 1.8 cm × 2.3 cm) duration per animal was approximately 10 min. Actual blood flow is impossible to measure with Laser-Doppler flowmetry (LDF), but is highly correlated to flux except at supranormal pressures [27]. Indeed, percentage reductions of cerebral perfusion are actually relative percentage reductions of flow and were calculated using the following formula:

$$(P_i/P_c) \times 100\% \quad (1)$$

where P<sub>i</sub> is flow values at ipsilateral side (injected side) and P<sub>c</sub> is flow values at contralateral side (unaffected side); both are measured in perfusion unit (PU)

#### Behavioral tests

Behavioral tests used include the limb-use asymmetry (cylinder) and vibrissae-stimulated forelimb placing (vibrissae) for somatosensory asymmetry. Animals were tested before and 72 h post-surgery. The cylinder test examines the level of preference for using the non-impaired forelimb for weight shifting movements during spontaneous vertical exploration. Non-infarcted animals typically use both limbs equally for upright support, but after damage to the motor system, animals show an asymmetric reliance on the less-affected (ipsilateral) limb [28]. Rats were placed in a specially designed transparent cylinder (20 cm i.d, 40 cm height) for 3 min. The cylinder was high enough that the animal could not reach the top edge or escape, but encourages vertical exploration of the glass walls with the forepaws as well as landing (return to floor) activity. Forepaw use during exploration of the rats was scored by analyzing slow-motion playback of digital video recorded from a camera installed over the cylinder, by an experimenter blind to the treatment condition. The fraction of events in which the animal used the ipsilateral (affected), contralateral (un/less affected), or both forelimbs was calculated as a dependent measure of asymmetry.

Vibrissae-stimulated forepaw and extinction placing tests evaluate sensorimotor/proprioceptive deficits. To determine whether an animal has asymmetrical sensorimotor perception, the animal is held by the torso with its forelimbs hanging freely, and then slowly moved laterally toward the edge of the table or countertop until the vibrissae of one side makes contact with the edge. Intact rats quickly place the ipsilateral forepaw on the edge or the surface of the table when the ipsilateral vibrissae brush the table edge. In contrast, rats with damage to the motor system often do not respond to vibrissae stimulation on the affected side (contralateral side). Using Windows Movie Maker 2007 (Microsoft), a treatment-blinded viewer scored digital video records for each side, using the frame rate and the number of frames between vibrissae stimulation and forepaw contact to determine placing response delay intervals.

#### Histology

Animals were sacrificed at 72 h for TTC staining. The brains were quickly isolated, placed in cold PBS (0-4°C) for 30 min and then sectioned into 2-mm thick coronal slices using a brain slice matrix (Leica Microsystems, IL, U.S.A.) The tissue sections were held in cold PBS for 3 min before they were incubated in TTC solution (0.05%

TTC in PBS) for 30 min at 37°C. The sections were washed three times with PBS (one minute each) and fixed in 0.1 M phosphate buffered formaldehyde (PBF). The sections then were placed on a flatbed scanner (EPSON 1680) to obtain images.

#### **Infarction Area Analysis**

Calibrated digital images of tissue sections were made at 600-dpi scanner resolution with 48-bit color and saved as TIFF files. The infarction areas were quantified by visual thresholding of TTC-labeled (normal) and unlabeled (infarct) tissue, and measurement of each area, using Image J version 5.0 (NIH). Infarct volume was estimated as the product of area on each section and the number of 2 mm sections exhibiting infarct. The ratio of infarct to normal volume was used as dependent measures for evaluating pGSN effects.

#### **Statistical analysis**

All data are expressed as arithmetic means  $\pm$  s.e.m. Two-way ANOVA (time and treatment) was followed by Bonferroni *post hoc* test to compare behavioral dependent variables between groups. Comparisons of infarct area were made by two-tailed Student's t-test; and p-values less than 0.05 were considered to be significant.

### **Results**

#### **Treatment of pGSN did not interrupt ET-1 induced artery contraction**

In order to test the effect of pGSN and ET-1 on MCAO, cohorts ( $n = 3$ ) of rats were injected with ET-1 to induce transient middle cerebral artery occlusion (MCAO). Approximately 5-10 min after ET-1 injection, pGSN or saline was injected at the same location. The time points of scanning were based on ET-1 injection time. The relative perfusion unit (PU) or blood flow values of animals before injection were in the range of 800-1, 600 PU and the difference between two hemispheres of the brain was not statistically significant. After 20 min following ET-1 injection, the flux values on the injection side dropped to the range of 300-600 PU. The calculations were made using formula 1 described in the methods. Relative flow values showed a rapid decrease to  $\sim 50\%$  of baseline in all animals and flow remained maximally decreased for 20-30 min after ET-1 injection (Figure 1). ET-1 injection resulted in a drop in perfusion immediately after injection regardless of pGSN injection at the same location. Reperfusion was observed in both groups after  $\sim 60$  min. These results indicate that pGSN injection did not interrupt the induction of artery contraction by ET-1.

#### **Treatment of pGSN significantly reduced ET-1 induced behavioral deficits**

To test the protective effect of pGSN, behavioral studies were conducted. Initially, five rats were randomly assigned into ET-1 injection alone or ET-1 plus pGSN group. In the ET-1 only group, one rat died and one rat was paralyzed after ET-1 injection and was euthanized immediately. In ET-1 plus pGSN treated group, one rat did not show any infarction by TTC staining and was excluded. Therefore, three animals in ET-1 group and four animals in ET-1 plus pGSN group were examined for behavioral deficits and brain damage.

#### **Cylinder test**

As shown in Figure 2, ET-1 induced MCAO resulted in profound impairment of contralateral forepaw function three days following injection. ET-1-treated animals showed significant reduction of symmetrical forepaw use during wall exploration (from approximately 80% to 20%), while artificial cerebrospinal fluid (aCSF) injection had no effect. In the pGSN treatment group, the percentage of symmetrical forepaw use was significantly higher than the control group (20% vs. 70%,  $p$ -value  $< 0.01$ ). The number of attempts to explore the wall was also lower than before surgery (data is not shown). These results indicate that pGSN treatment significantly prevented MCAO-induced damage to the motor system.

#### **Vibrissae test**

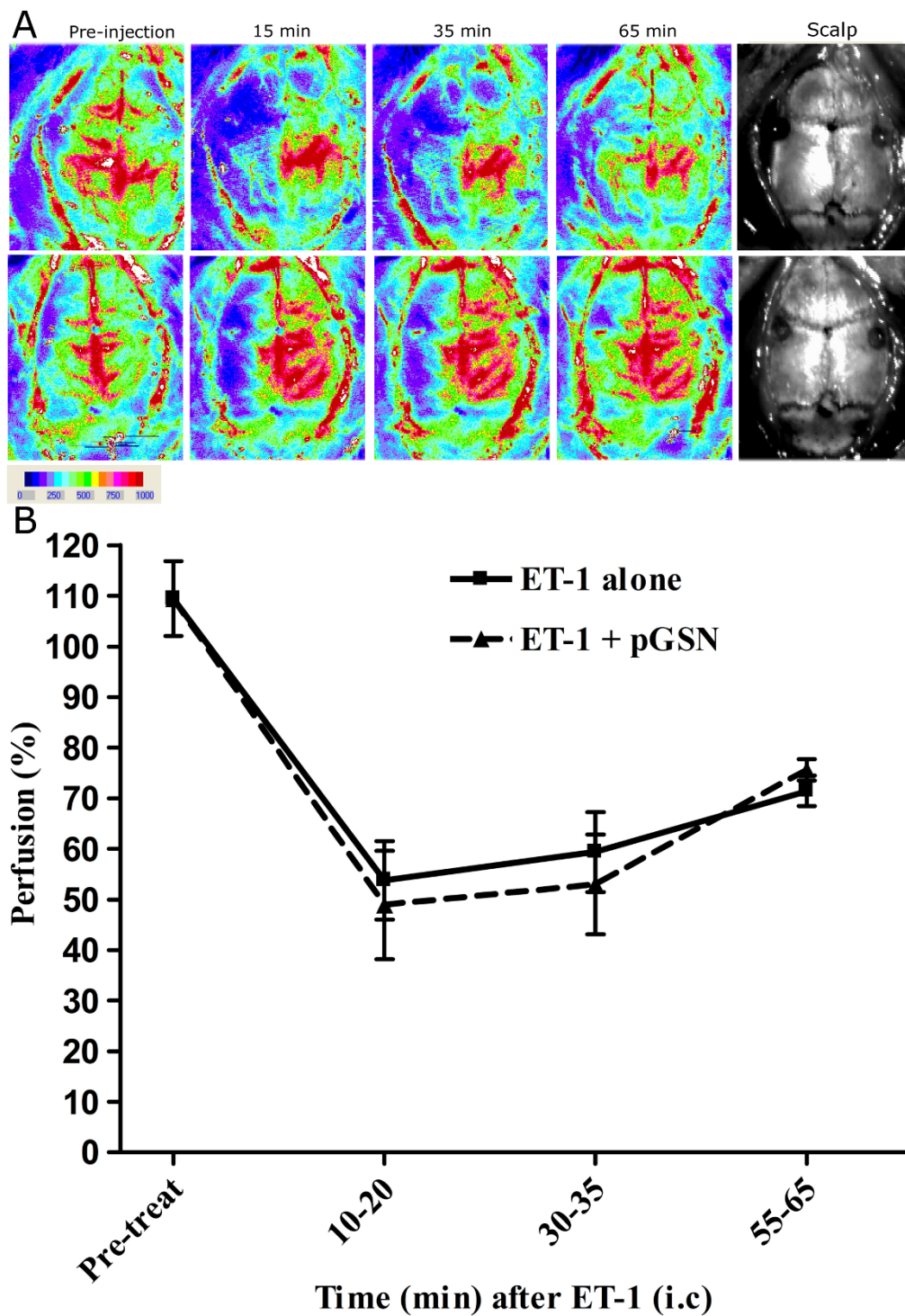
To test the effect of pGSN on sensorimotor system, we also performed vibrissae testing. As expected, vibrissae-stimulated placing of the ipsilateral forepaw was not affected 3 days after experimental ischemic stroke (Figure 3A). Contralateral forepaw placing was significantly slowed (from 1 s to 18 s) in the control (ET-1 alone) group (Figure 3B). Intriguingly, pGSN treatment significantly reduced the time of contralateral forepaw placing compared to control group (18 s vs. 9 s,  $p$ -value  $< 0.01$ ). These results indicated that pGSN treatment significantly prevented the loss of sensorimotor function induced by MCAO.

#### **Treatment of pGSN reduced MCAO induced brain damage**

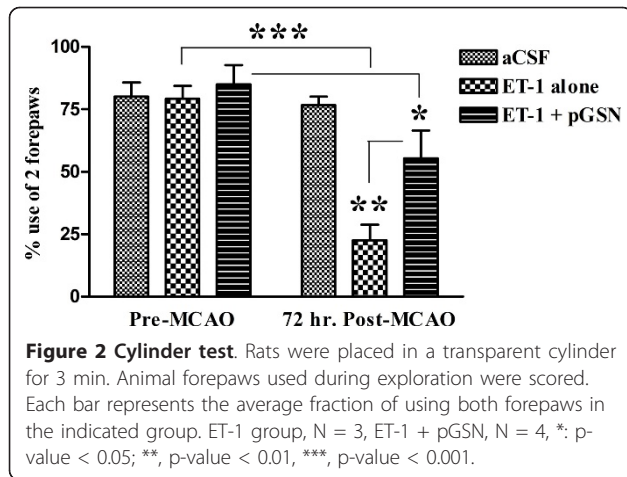
In the control rats, ET-1 produced large and reproducible unilateral infarcts that involved the rostro-central dorsolateral cortex and basal ganglia, corresponding to the full extent of the MCA territory. The infarction volume in the pGSN-treatment group was reduced by 49% compared to the control group (Figure 4). Sparing was observed in both cortical and subcortical structures.

### **Discussion**

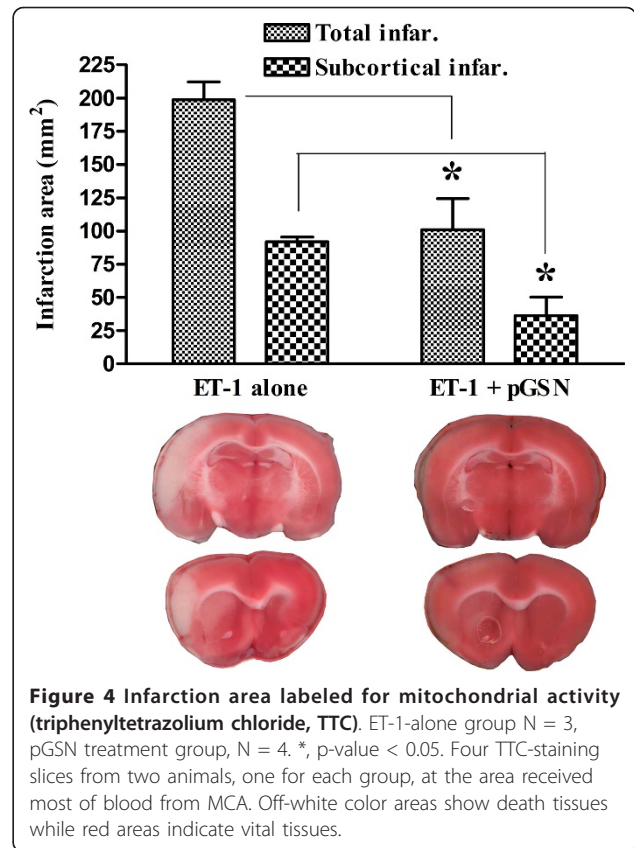
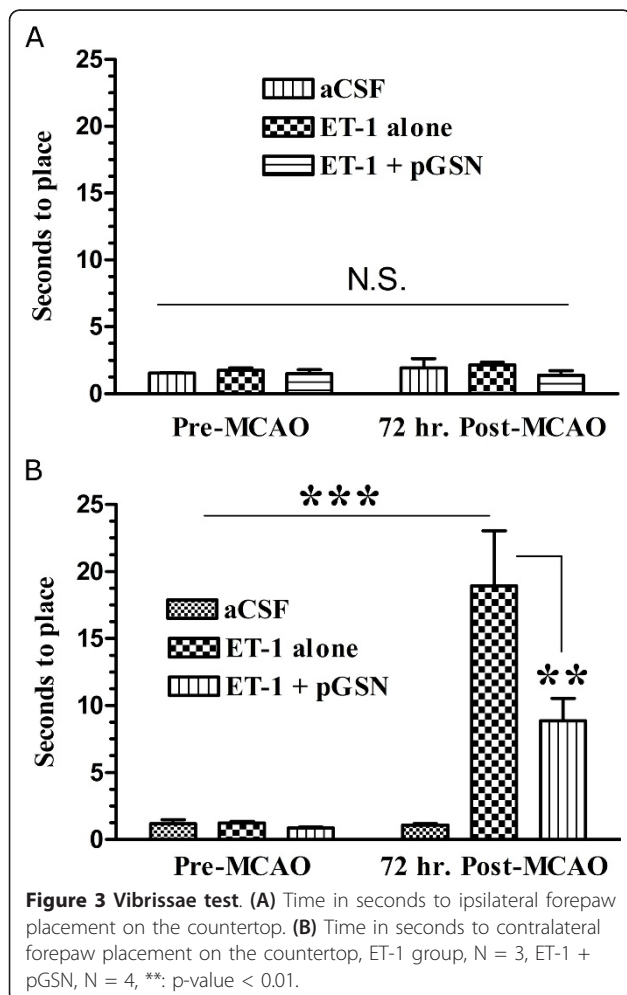
The current study reports the first time use of pGSN as a protein drug to reduce injury after transient local



**Figure 1 Perfusion measurements.** (A) Color photographs of an animal brain recorded at different time points (pre-injection, 10-20 min, 30-35 min, and 60-65 min from ET-1 injection time) by a digital camera of laser Doppler system, corresponding closely with the blood flow image. Look-up table shows arbitrarily assigned perfusion unit (PU) from the lower limit 0 to upper limit 1,000 and above. The scalps demonstrate the holes and injection sites. (B) Percentage perfusion reduction as a function of time calculated using formula 1. All rats were injected with ET-1 (240 pmol in 3 µL PBS) proximal to the left middle cerebral artery. About 5-10 min after ET-1 injection, pGSN (35.71 pmol in 3 µL saline) was intracranially injected (i.c) at the same site in a group and no injection in the other group. The dotted line represents the average levels in pGSN treated group (N = 3). The solid line represent levels in control group (N = 3). The differences at all-time points were not statically significant.



ischemic stroke. We demonstrate that pGSN can improve sensorimotor recovery in conjunction with substantial reduction in infarct volume present three days after stroke.



Transient middle cerebral artery occlusion (tMCAO) induced by ET-1, a potent vasoconstriction peptide, decreased relative cerebral blood flow in brain tissue served by the MCA by 50% in all groups. In previous studies, injection of ET-1 adjacent to MCA has been shown to reduce blood flow 30-75% in the region supplied by the artery including cortex and basal ganglia, and to produce subsequent ischemic neuropathology in these regions of the brain [24,25,29].

Our results demonstrate that after 10-20 min following ET-1 intracranial injection, the ipsilateral cerebral relative blood flow decreased approximately 50% in all groups of animals (Figure 1), indicating that all animals initially have comparable ischemic strokes and that pGSN did not reduce the magnitude of the original ischemic event, but limited the subsequent degeneration and associated loss of function. This suggests that pGSN does not interfere with ET-1 action on its receptors, and corresponds to studies in which GSN knockout mice had larger infarct volume at 22 h even though reductions in CBF during MCAO were not altered [23].

Although this study shows that pGSN in or near an infarct can reduce neuropathology and functional loss due to ischemic stroke, the mechanism by which pGSN mediates protection are not yet clear. One likely mechanism involves actin depolymerization. Upon tissue

injury due to glucose/oxygen deprivation (CBF significantly reduced), large amounts of actin can be released from damaged cells into the extracellular space. Since the ionic conditions in the extracellular fluid favor actin polymerization, high amounts of F-actin could be released to potentially increase the viscosity of blood and perturb blood flow through the microvasculature. The actin severing protein gelsolin has a secreted plasma isoform (called plasma gelsolin), which is constitutively active in the high extracellular calcium concentrations of plasma. Plasma gelsolin severs extracellular F-actin to short filaments, and by capping barbed ends, prevents polymerization and favors monomer release. Therefore, pGSN acts as “debris cleaner” limiting inflammation and possibly decrease blood clogging [22]. Another possible mechanism is through anti-apoptotic activity of pGSN. In Jurkat cells, overexpression of gelsolin inhibits cytokine induced apoptosis [30]. It has been reported that gelsolin can form complex with phosphatidylinositol 4, 5-bisphosphate and inhibit caspase-3 and -9 activities [31]. In addition, pGSN may also play an important role in regulating inflammation. Future studies will focus on the mechanisms of pGSN protection.

Histone deacetylase inhibitor-mediated neuroprotection against MCAO has been associated with GSN upregulation and reductions in filamentous actin, neither of which was shown to occur in GSN-knockout mice in which the treatment was ineffective [32]. Also, GSN can modulate the actin cytoskeleton regulation of numerous ion channels responsible for elevated cytotoxic intracellular calcium and glutamate excitotoxicity [33-35].

Gelsolin is regulated by phosphatidylinositol 4, 5-bisphosphate (PIP<sub>2</sub>), and contains a lipid signaling binding domain. This domain has been shown to bind to a number of bioactive lipids including lysophosphatidic acid (LPA), lipoteichoic acid (LTA), and lipopolysaccharide (LPS) [36-39]. LPA levels have been shown to be increased in patients suffering ischemic stroke [40]. LPA signaling has also been shown to regulate a number of pro-inflammatory genes [41]. Increasing gelsolin levels during stroke may serve to modulate the inflammatory response thereby offering protection against the inflammation related neurodegeneration following stroke.

Further emphasis of the potential importance of GSN in stroke comes from recent reports that circulating pGSN levels are reduced in ischemic stroke sufferers and is highly predictive for first-year mortality from ischemic stroke [37]. Matrix metalloproteinases (MMPs), zinc-containing endopeptidases that participate in both normal and pathological processes, are upregulated during inflammatory conditions [42], including stroke [43]. pGSN is cleaved *in vitro* by MMP-3, MMP-2, MMP-1,

MMP-14 and MMP-9 [44] which may be the cause of the severe depletion of pGSN observed in patients who suffer ischemic stroke. Replacing lost pGSN may interrupt pro-inflammatory cascade and result in decreased brain damage.

## Conclusion

The current study offers a proof of principle that delivery of pGSN following ischemic stroke results in neuroprotection and can reduce both sensory and motor deficits that arise following stroke. Future research aimed at characterizing improved delivery, dose response, temporal, safety, pharmacokinetic issues, and physiological mechanisms for further pre-clinical development of this promising strategy are called for.

## List of abbreviations

ANOVA: Analysis of variance between groups; aCSF: Artificial cerebrospinal fluid; CBF: Cerebral blood flow; CDC: Center for Disease Control and Prevention; ET-1: Endothelin-1; FDA: The U.S Food and Drug Administration; GSN: Gelsolin; pGSN: Plasma gelsolin; LDF: Laser-Doppler flowmetry; LPA: Lysophosphatidic acid; LTP: Lipoteichoic acid; LPS: Lipopolysaccharide; MCA: Middle cerebral artery; MCAO: Middle cerebral artery occlusion; tMCAO: Transient middle cerebral artery occlusion; MMPs: Matrix metalloproteinases; PBF: Phosphate buffered formaldehyde; PBS: Phosphate buffered saline; PU: Perfusion unit; rtPA: Recombinant tissue plasminogen activator; TTC: 2, 3, 5-triphenyltetrazolium chloride.

## Acknowledgements

This work was supported in part by NIH Grant # P01AG0485 and the U.S. Department of Veterans Affairs. Publication of this article was funded in part by the University of Florida Open-Access Publishing Fund.

## Author details

<sup>1</sup>Department of Pharmaceutics, University of Florida College of Pharmacy, Gainesville, FL 32610, USA. <sup>2</sup>Department of Pharmacology & Therapeutics, University of Florida College of Medicine, Gainesville, FL 32610, USA. <sup>3</sup>Department of Pharmacodynamics, University of Florida College of Pharmacy, Gainesville, FL 32610, USA. <sup>4</sup>Department of Veterans Affairs Medical Center, Gainesville, FL 32602, USA. <sup>5</sup>Medco School of Pharmacy, Fairleigh Dickinson University, Madison, NJ 07940, USA.

## Authors' contributions

HTL and ACH contributed substantially to experimental design, experimental implementation, data analysis, and manuscript preparation. JST contributed to the cerebral perfusion measurement in MG's Lab, JL and JP contributed to the behavioral tests. MAK, JAH and SS conceived of the study, contributed to experimental design, data analysis and revised the manuscript. All authors have read and approved the final version of the manuscript.

## Competing interests

The authors declare that they have no competing interests.

Received: 2 September 2011 Accepted: 2 November 2011

Published: 2 November 2011

## References

1. Lloyd-Jones D, Adams R, Carnethon M, De Simone G, Ferguson TB, Flegal K, Ford E, Furie K, Go A, Greenlund K, Haase N, Hailpern S, Ho M, Howard V, Kissela B, Kittner S, Lackland D, Lisabeth L, Marelli A, McDermott M, Meigs J, Mozaffarian D, Nichol G, O'Donnell C, Roger V, Rosamond W, Sacco R, Sorlie P, Stafford R, Steinberger J, Thom T, Wasserthiel-Smoller S, Wong N, Wyllie-Rosett J, Hong Y: **Heart disease and stroke statistics-2009 update: a**

- report from the American Heart Association Statistics Committee and Stroke Statistics Subcommittee. *Circulation* 2009, **119**:e21-181.
2. Roger VL, Go AS, Lloyd-Jones DM, Adams RJ, Berry JD, Brown TM, Carnethon MR, Dai S, de Simone G, Ford ES, Fox CS, Fullerton HJ, Gillespie C, Greenlund KJ, Hailpern SM, Heit JA, Ho PM, Howard VJ, Kissela BM, Kittner SJ, Lackland DT, Lichtman JH, Lisabeth LD, Makuc DM, Marcus GM, Marelli A, Matchar DB, McDermott MM, Meigs JB, Moy CS, Mozaffarian D, Mussolino ME, Nichol G, Paynter NP, Rosamond WD, Sorlie PD, Stafford RS, Turan TN, Turner MB, Wong ND, Wylie-Rosett J: **Heart Disease and Stroke Statistics—2011 Update: A Report From the American Heart Association.** *Circulation* 2011, **123**:e18-e209.
  3. Hacke W, Kaste M, Bluhmki E, Brozman M, Davalos A, Guidetti D, Larrue V, Lees KR, Medeghri Z, Machnig T, Schneider D, von Kummer R, Wahlgren N, Toni D: **Thrombolysis with alteplase 3 to 4.5 hours after acute ischemic stroke.** *N Engl J Med* 2008, **359**:1317-29.
  4. Endres M, Engelhardt B, Koistinaho J, Lindvall O, Meairs S, Mohr JP, Planas A, Rothwell N, Schwabinger M, Schwab ME, Vivien D, Wieloch T, Dirnagl U: **Improving outcome after stroke: overcoming the translational roadblock.** *Cerebrovasc Dis* 2008, **25**:268-78.
  5. Barone FC, Feuerstein GZ: **Inflammatory mediators and stroke: new opportunities for novel therapeutics.** *J Cereb Blood Flow Metab* 1999, **19**:819-34.
  6. del Zoppo GJ, Becker KJ, Hallenbeck JM: **Inflammation after stroke: is it harmful?** *Arch Neurol* 2001, **58**:669-72.
  7. Kwiatkowski DJ, Mehl R, Izumo S, Nadal-Ginard B, Yin HL: **Muscle is the major source of plasma gelsolin.** *J Biol Chem* 1988, **263**:8239-43.
  8. Maeda K, Okubo K, Shimomura I, Mizuno K, Matsuzawa Y, Matsubara K: **Analysis of an expression profile of genes in the human adipose tissue.** *Gene* 1997, **190**:227-35.
  9. Kwiatkowski DJ, Stossel TP, Orkin SH, Mole JE, Colten HR, Yin HL: **Plasma and cytoplasmic gelsolins are encoded by a single gene and contain a duplicated actin-binding domain.** *Nature* 1986, **323**:455-8.
  10. Yin HL, Stossel TP: **Control of cytoplasmic actin gel-sol transformation by gelsolin, a calcium-dependent regulatory protein.** *Nature* 1979, **281**:583-6.
  11. Janmey PA, Lind SE: **Capacity of human serum to depolymerize actin filaments.** *Blood* 1987, **70**:524-30.
  12. Yin HL, Kwiatkowski DJ, Mole JE, Cole FS: **Structure and biosynthesis of cytoplasmic and secreted variants of gelsolin.** *J Biol Chem* 1984, **259**:5271-6.
  13. Lind SE, Smith DB, Janmey PA, Stossel TP: **Role of plasma gelsolin and the vitamin D-binding protein in clearing actin from the circulation.** *J Clin Invest* 1986, **78**:736-42.
  14. Yuan X, Desiderio DM: **Proteomics analysis of phosphotyrosyl-proteins in human lumbar cerebrospinal fluid.** *J Proteome Res* 2003, **2**:476-87.
  15. Coue M, Korn ED: **Interaction of plasma gelsolin with ADP-actin.** *J Biol Chem* 1986, **261**:3628-31.
  16. Lee WM, Galbraith RM: **The extracellular actin-scavenger system and actin toxicity.** *N Engl J Med* 1992, **326**:1335-41.
  17. Haddad JG, Harper KD, Guoth M, Pietra GG, Sanger JW: **Angiopathic consequences of saturating the plasma scavenger system for actin.** *Proc Natl Acad Sci USA* 1990, **87**:1381-5.
  18. Thorstenson R, Utter G, Norberg R: **Further characterization of the Ca<sup>2+</sup>-dependent F-actin-depolymerizing protein of human serum.** *Eur J Biochem* 1982, **126**:11-6.
  19. Lind SE, Smith DB, Janmey PA, Stossel TP: **Depression of gelsolin levels and detection of gelsolin-actin complexes in plasma of patients with acute lung injury.** *Am Rev Respir Dis* 1988, **138**:429-34.
  20. Rothenbach PA, Dahl B, Schwartz JJ, O'Keefe GE, Yamamoto M, Lee WM, Horton JW, Yin HL, Turnage RH: **Recombinant plasma gelsolin infusion attenuates burn-induced pulmonary microvascular dysfunction.** *J Appl Physiol* 2004, **96**:25-31.
  21. Levy MM, Fink MP, Marshall JC, Abraham E, Angus D, Cook D, Cohen J, Opal SM, Vincent JL, Ramsay G: **2001 SCCM/ESICM/ACCP/ATS/SIS International Sepsis Definitions Conference.** *Crit Care Med* 2003, **31**:1250-6.
  22. Lee PS, Waxman AB, Cotich KL, Chung SW, Perrella MA, Stossel TP: **Plasma gelsolin is a marker and therapeutic agent in animal sepsis.** *Crit Care Med* 2007, **35**:849-55.
  23. Endres M, Fink K, Zhu J, Stagliano NE, Bondada V, Geddes JW, Azuma T, Mattson MP, Kwiatkowski DJ, Moskowitz MA: **Neuroprotective effects of gelsolin during murine stroke.** *J Clin Invest* 1999, **103**:347-54.
  24. Moyanova S, Kortenska L, Kirov R, Iliev I: **Quantitative electroencephalographic changes due to middle cerebral artery occlusion by endothelin 1 in conscious rats.** *Arch Physiol Biochem* 1998, **106**:384-91.
  25. Biernaskie J, Corbett D, Peeling J, Wells J, Lei H: **A serial MR study of cerebral blood flow changes and lesion development following endothelin-1-induced ischemia in rats.** *Magn Reson Med* 2001, **46**:827-30.
  26. Fabricius M, Lauritzen M: **Laser-Doppler evaluation of rat brain microcirculation: comparison with the [14C]-iodoantipyrine method suggests discordance during cerebral blood flow increases.** *J Cereb Blood Flow Metab* 1996, **16**:156-61.
  27. Schallert T, Fleming SM, Leasure JL, Tillerson JL, Bland ST: **CNS plasticity and assessment of forelimb sensorimotor outcome in unilateral rat models of stroke, cortical ablation, parkinsonism and spinal cord injury.** *Neuropharmacology* 2000, **39**:777-87.
  28. Lloyd-Jones D, Adams RJ, Brown TM, Carnethon M, Dai S, De Simone G, Ferguson TB, Ford E, Furie K, Gillespie C, Go A, Greenlund K, Haase N, Hailpern S, Ho PM, Howard V, Kissela B, Kittner S, Lackland D, Lisabeth L, Marelli A, McDermott MM, Meigs J, Mozaffarian D, Mussolino M, Nichol G, Roger VL, Rosamond W, Sacco R, Sorlie P, Thom T, Wasserthiel-Smolter S, Wong ND, Wylie-Rosett J: **Heart disease and stroke statistics—2010 update: a report from the American Heart Association.** *Circulation* 2010, **121**:e46-e215.
  29. Sharkey J, Ritchie IM, Kelly PA: **Perivascular microapplication of endothelin-1: a new model of focal cerebral ischaemia in the rat.** *J Cereb Blood Flow Metab* 1993, **13**:865-71.
  30. Ohtsu M, Sakai N, Fujita H, Kashiwagi M, Gasa S, Shimizu S, Eguchi Y, Tsujimoto Y, Sakiyama Y, Kobayashi K, Kuzumaki N: **Inhibition of apoptosis by the actin-regulatory protein gelsolin.** *EMBO J* 1997, **16**:4650-6.
  31. Azuma T, Koths K, Flanagan L, Kwiatkowski D: **Gelsolin in complex with phosphatidylinositol 4, 5-bisphosphate inhibits caspase-3 and -9 to retard apoptotic progression.** *J Biol Chem* 2000, **275**:3761-6.
  32. Yildirim F, Gertz K, Kronenberg G, Harms C, Fink KB, Meisel A, Endres M: **Inhibition of histone deacetylation protects wildtype but not gelsolin-deficient mice from ischemic brain injury.** *Exp Neurol* 2008, **210**:531-42.
  33. Furukawa K, Fu W, Li Y, Witke W, Kwiatkowski DJ, Mattson MP: **The actin-severing protein gelsolin modulates calcium channel and NMDA receptor activities and vulnerability to excitotoxicity in hippocampal neurons.** *J Neurosci* 1997, **17**:8178-86.
  34. Becker PM, Kazi AA, Wadgaonkar R, Pearse DB, Kwiatkowski D, Garcia JG: **Pulmonary vascular permeability and ischemic injury in gelsolin-deficient mice.** *Am J Respir Cell Mol Biol* 2003, **28**:478-84.
  35. Fink KB, Paehr M, Djoufack PC, Weissbrich C, Bosel J, Endres M: **Effects of cytoskeletal modifications on Ca<sup>2+</sup> influx after cerebral ischemia.** *Amino Acids* 2002, **23**:325-9.
  36. Bucki R, Kulakowska A, Byfield FJ, Zendzian-Piotrowska M, Baranowski M, Marzec M, Winer JP, Ciccarelli NJ, Gorski J, Drozdowski W, Bittman R, Janmey PA: **Plasma gelsolin modulates cellular response to sphingosine 1-phosphate.** *Am J Physiol Cell Physiol* 2009, **297**:C1516-23.
  37. Meerschaert K, De Corte V, De Ville Y, Vandekerckhove J, Gettemans J: **Gelsolin and functionally similar actin-binding proteins are regulated by lysophosphatidic acid.** *EMBO J* 1998, **17**:5923-32.
  38. Bucki R, Georges PC, Espinassous Q, Funaki M, Pastore JJ, Chaby R, Janmey PA: **Inactivation of endotoxin by human plasma gelsolin.** *Biochemistry* 2005, **44**:9590-7.
  39. Bucki R, Byfield FJ, Kulakowska A, McCormick ME, Drozdowski W, Namiot Z, Hartung T, Janmey PA: **Extracellular gelsolin binds lipoteichoic acid and modulates cellular response to proinflammatory bacterial wall components.** *J Immunol* 2008, **181**:4936-44.
  40. Lou XL, Zhan XP, Li XP: **[Relationship between plasma lysophosphatidic acid levels and prognosis of ischemic stroke].** *Zhongguo Wei Zhong Bing Ji Jiu Yi Xue* 2008, **20**:689-90.
  41. Lin CI, Chen CN, Lin PW, Chang KJ, Hsieh FJ, Lee H: **Lysophosphatidic acid regulates inflammation-related genes in human endothelial cells through LPA1 and LPA3.** *Biochem Biophys Res Commun* 2007, **363**:1001-8.
  42. Grinnell F, Baxter CR, Zhu M, Yin HL: **Detection of the actin scavenger system in burn wound fluid.** *Wound Repair Regen* 1993, **1**:236-43.
  43. Martin A, Garofalakis A, Tavitian B: **In Vivo Evidence that the Increase in Matrix Metalloproteinase Activity Occurs Early after Cerebral Ischemia.** *Mol Imaging* .



44. Bini A, Itoh Y, Kudryk BJ, Nagase H: **Degradation of cross-linked fibrin by matrix metalloproteinase 3 (stromelysin 1): hydrolysis of the gamma Gly 404-Ala 405 peptide bond.** *Biochemistry* 1996, **35**:13056-63.

doi:10.1186/2040-7378-3-13

**Cite this article as:** Le et al.: The protective effects of plasma gelsolin on stroke outcome in rats. *Experimental & Translational Stroke Medicine* 2011 **3**:13.

**Submit your next manuscript to BioMed Central  
and take full advantage of:**

- Convenient online submission
- Thorough peer review
- No space constraints or color figure charges
- Immediate publication on acceptance
- Inclusion in PubMed, CAS, Scopus and Google Scholar
- Research which is freely available for redistribution

Submit your manuscript at  
[www.biomedcentral.com/submit](http://www.biomedcentral.com/submit)

